

## OWNER'S MANUAL

### Installation, Operating, Inspection and Maintenance Instructions

- Model #'s:**
- QP-1** - Complete Davit
  - CSQP-1** - Complete Davit with retrieval system\*
  - QP-B** - Permanent Base
  - QP-D** - Rotating Boom
  - QP-P** - Extension Pole

#### **Warning**

You must read and fully understand all instructions, or have all instructions explained to you, before attempting to use this device. Equipment must not be installed, operated or inspected by anyone who does not understand this Owner's Manual. Failure to observe these instructions could result in serious injury or death. Training and instruction review should be repeated at regular intervals. Keep these instructions available for immediate reference. If you have any questions regarding these instructions or need additional copies, call Gemtor toll free at 800-405-9048.



CSQP-1

#### **DESCRIPTION:**

Gemtor Davits are designed to be used principally with Gemtor Sentry, Man-rated or work winches and Sentry self-retracting lifelines. The Davit can be used where the conventional Tripod and Quadpod are either impractical or impossible to use. The Davit Base is permanently attached to the floor/ground, and the Davit boom can be removed and moved from one base to another (including Gemtor Model # QP-L portable Quadpod base) to provide a convenient, portable attachment point. The Davit's Boom rotates 360° and can be locked at any position.

#### **The Gemtor Davit QP-1 consists of three parts (Figures 2,3):**

**A. Base** - The base is a 1/2" thick 14" long square plate with a cylindrical shaft (1) in the center that is welded to the base plate and supported by 4 ribs. The plate has 12 holes, each 9/16" diameter, equally spaced along an inner circumference for attaching 1/2" bolts. **(Model QP-B)**

**B. Extension Pole** - One end of the extension pole is attached to the shaft of the base. While the other end (2) has a shaft for attaching to the Boom. There are two screw handles (3 and 4), one (3) to fix the pole to the base, and another (4) to fix the Boom to the pole. **(Model # QP-P)**

**C. Boom** - The Boom (Model # QP-D) is made of steel, and has on one end a cylinder for attachment to the shaft (2) of the exterior pole of the base. The opposite end of the Boom has two pulleys (5) with a security pin (6) keep the cable from coming off of the pulleys. There are 2 brackets (7 and 8) for the attachment of Gemtor fall protection and recovery systems and winches. Bracket (7) is for the attachment of a Three-Way fall protection and recovery unit (9). Bracket (8) is for the attachment of a Personnel Winch or Work Winch (10). When the Boom is attached to the exterior pole, the Boom can be rotated by an angle of 360 degrees. The screw handle (4) is designed to fix or release the Boom on the extension pole in the necessary position. **(Model # QP-D)**

\*Refer to separate instructions supplied with RS3 series retrieval winches.

**IMPORTANT INFORMATION:**

**Purchased from (Distributor):** \_\_\_\_\_

**Address:** \_\_\_\_\_

\_\_\_\_\_

**City:** \_\_\_\_\_ **State** \_\_\_\_\_ **Zip** \_\_\_\_\_

**Purchase Date:** \_\_\_\_\_

**Model Number:** \_\_\_\_\_

**Serial Number:** \_\_\_\_\_

**Property of:**

\_\_\_\_\_

\_\_\_\_\_

\_\_\_\_\_

\_\_\_\_\_

\_\_\_\_\_

**Keep this information for future reference.**

**IMPORTANT: Return registration card immediately**

**SPECIFICATIONS:**

Model Number	QP-1	CSQP-1
Description	Davit, Complete	Davit, Complete w/Retrieval Winch
Supplied Components	QP-B (permanent base), QP-D (rotating boom/davit arm) QP-P (extension pole)	QP-B (permanent base), QP-D (rotating boom/davit arm) QP-P (extension pole) RS3-50 (Retrieval Winch)
Maximum static test load	5400 lbs.	5400 lbs.
Working load		
Personnel	350 lbs.	350 lbs.
Materials	600 lbs.	600 lbs.
Head Room	86"	86"
Overall Height	89"	89"
Reach	26"	26"
Angle of rotation of the Davit arm (boom)	360°	360°
Size for transport and storage (w x h):		
Base (not portable)	14" x 13"	14" x 13"
Extension Pole	4" x 35"	4" x 35"
Davit Arm (QP-D)	17" x 62"	17" x 62"
Retrieval Winch (RS3-50)	N/A	14" x 10" x 10"
Weight:		
Base	46 lbs.	46 lbs.
Extension Pole	32 lbs.	32 lbs.
Davit Arm (QP-D)	41 lbs	41 lbs
Retrieval Winch (RS3-50)	N/A	45 lbs.

**TRAINING:**

The employer shall provide a training program for each employee who might be exposed to fall hazards. The program shall enable each employee to recognize the hazards of falling and shall train each employee in the procedures to be followed in order to minimize these hazards.[OSHA 1926.503(a)(1)]

The employer shall assure that each employee has been trained, as necessary, by a competent person qualified in the following areas:

- (i) The nature of fall hazards in the work area;
- (ii) The correct procedures for erecting, maintaining, disassembling, and inspecting the fall protection systems to be used;
- (iii) The use and operation of guardrail systems, personal fall arrest systems, safety net systems, warning line systems, safety monitoring systems, controlled access zones, and other protection to be used;
- (iv) The role of each employee in the safety monitoring system when this system is used;
- (v) The limitations on the use of mechanical equipment during the performance of roofing work on low-sloped roofs;
- (vi) The correct procedures for the handling and storage of equipment and materials and the erection of overhead protection;
- (vii) The role of employees in fall protection plans;
- (viii) The standards contained in this subpart.[OSHA1926.503(a)(2)]

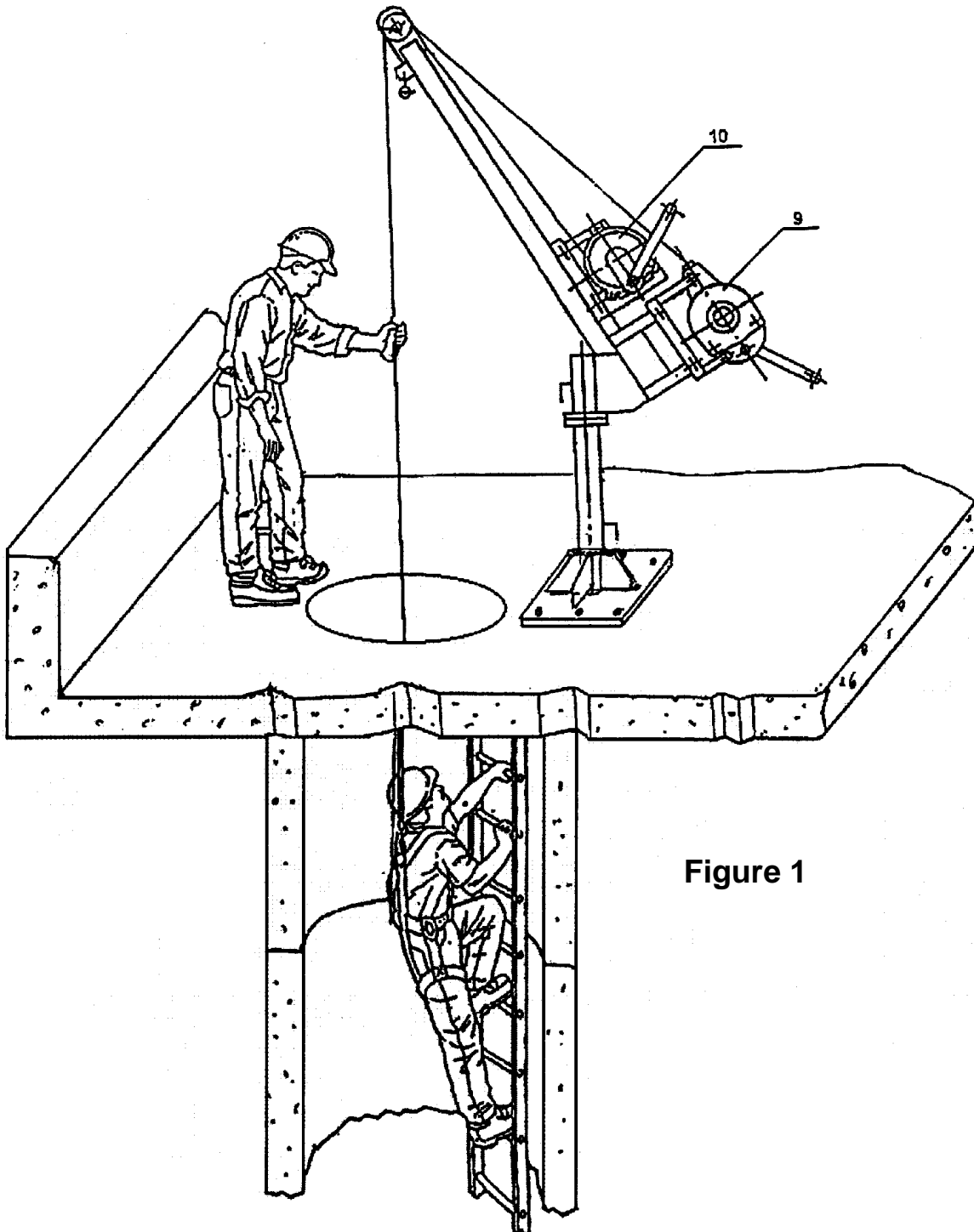
The employer shall verify compliance with paragraph (a) of this section by preparing a written certification record. The written certification record shall contain the name or other identity of the employee trained, the date(s) of the training, and the signature of the person who conducted the training or the signature of the employer. If the employer relies on training conducted by another employer or completed prior to the effective date of this section, the certification record shall indicate the date the employer determined the prior training was adequate rather than the date of actual training.[OSHA 1926.503(b)(1)]

## INSTALLATION

All individuals who may use or be required to use the Davit QP-1 MUST be instructed on how to use it correctly. They MUST read, understand, and follow all instructions and warnings stated on the Davit or contained in or attached to the Davit. A review of the proper procedure should be made before each use.

### Installation & Assembly Procedure

1. The Davit base must be mounted level with the ground with the post perpendicular to the mounting surface. The base can be attached to a concrete or steel surface using the bolts holes around the base plate or it can be welded to steel construction. In either case, the end user is responsible for the proper installation of the base and to ensure that the mounting surface is of sufficient strength.
2. Position the base so that its center is 26" from the center of the opening ensure that the Davit arm can be rotated into position with its cable over the center of the opening.
3. Install the extension pole on the base shaft and fix the position using the screw handle(3).
4. Install the Davit Boom on the extension pole shaft and fix the position using the screw handle (4).
5. Install the fall protection and recovery unit (9) (i.e. RS3-50) on the bracket (7) by using lock pins with hitch pins.
6. Install the Gemtor Personnel Winch or Gemtor Work Winch (10) or alternative equivalent equipment on the bracket (8) by using lock pins with hitch pins.
7. Pull out cable from each unit, pass it through the upper pulleys (5) and fix it using the security pin (6).
8. Rotate the boom into working position so that the cable is exactly above the center of the confined space opening and secure it with the screw handle (4).



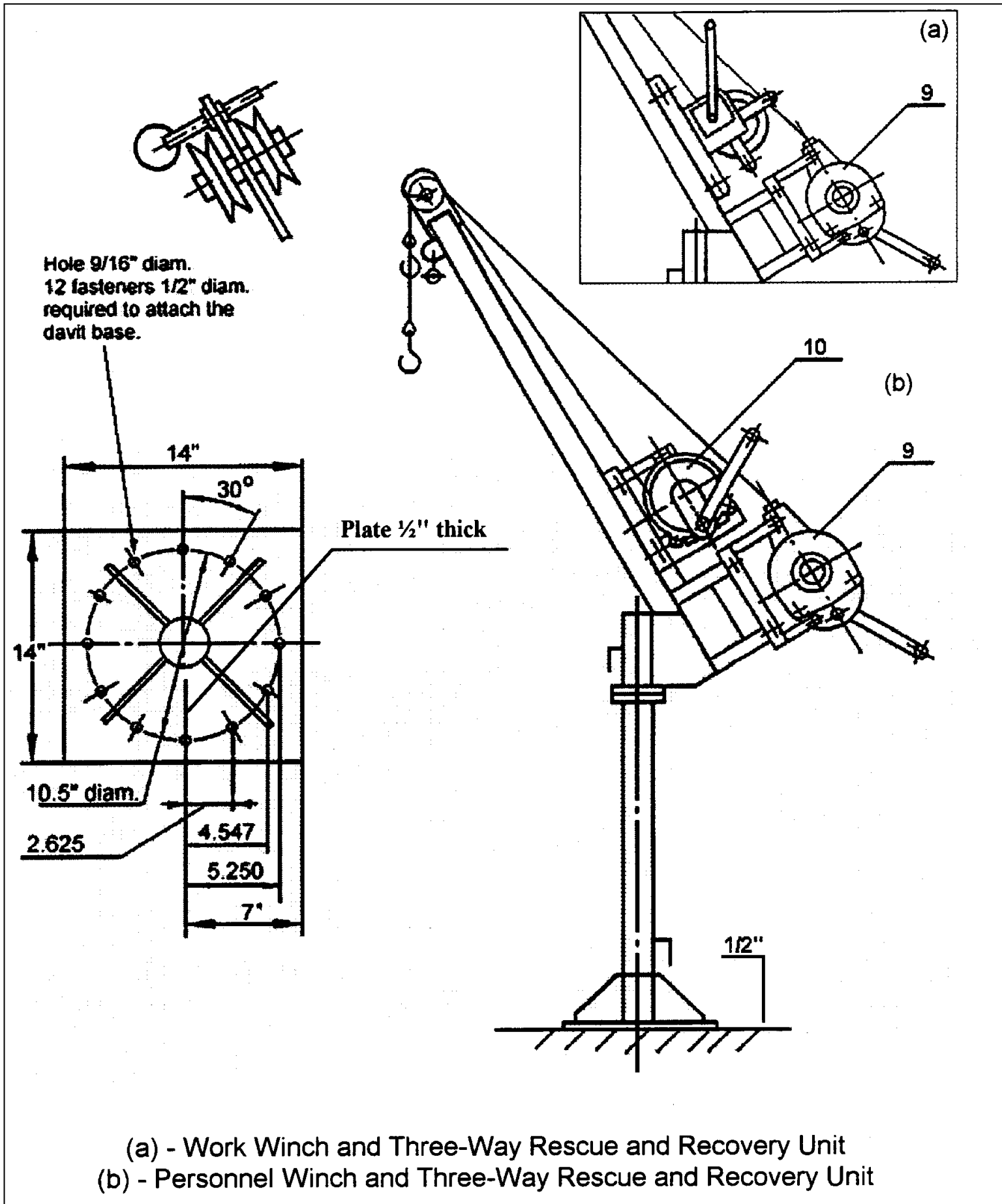


Figure 2

**Installation of Gemtor Confined Space Rescue and Retrieval equipment on Davit**

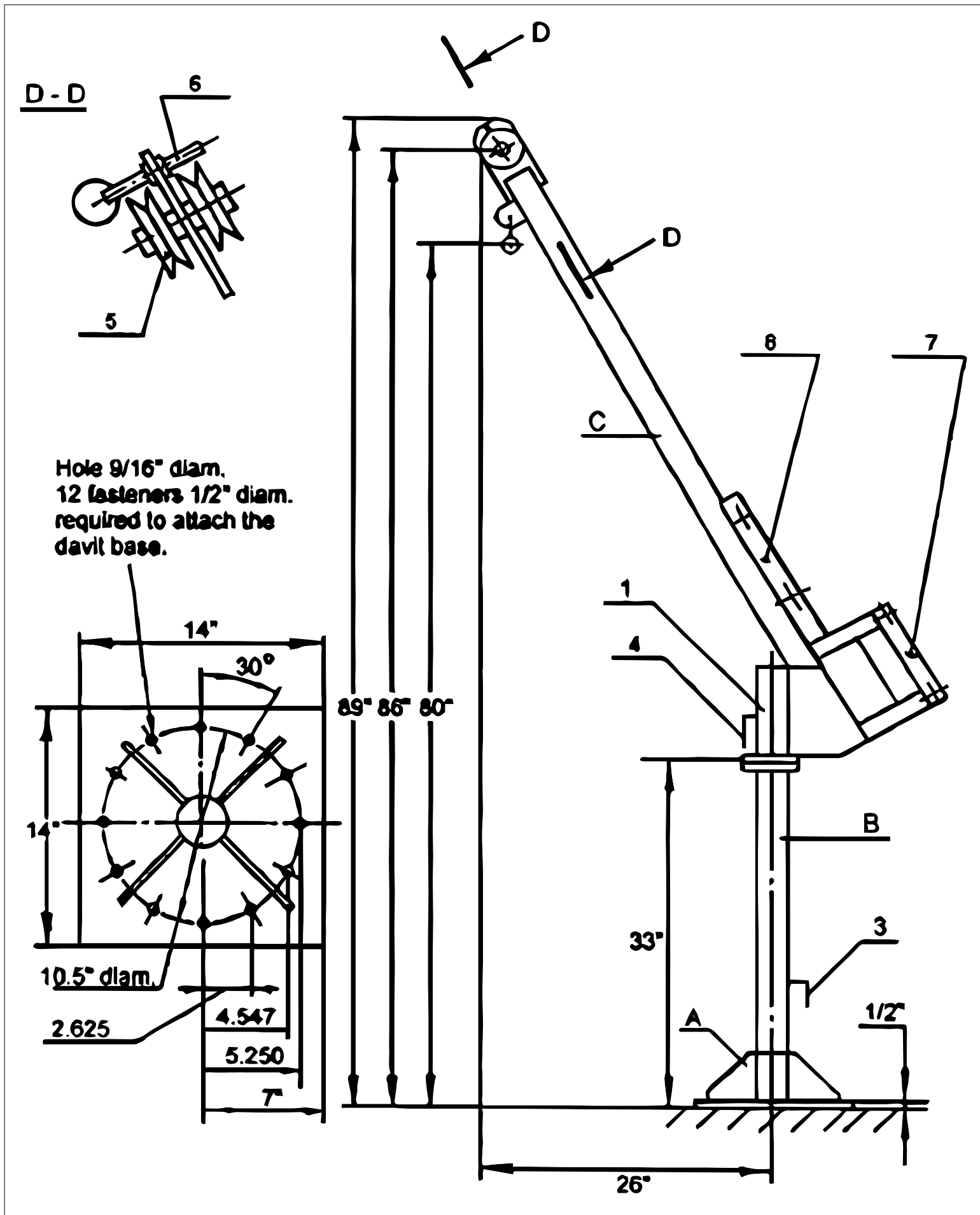


Figure 3  
Gemtor Model # QP-1 Davit

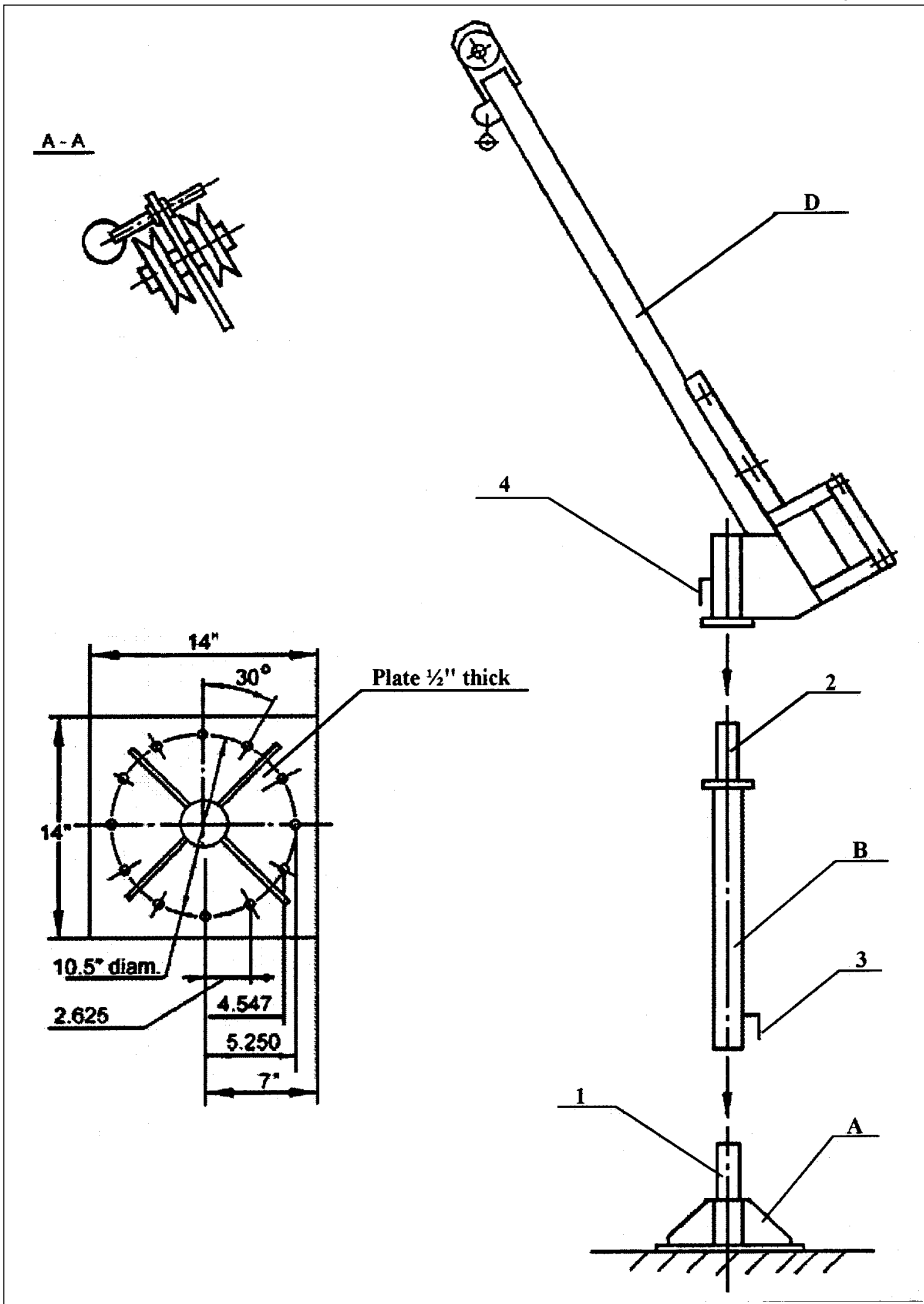


Figure 4  
Gemtor Model # QP-1 Davit Components

**INSPECTION:**

Equipment must be inspected before each use; if bent, damaged or if parts have been substituted, **DO NOT USE**. Return to Gemtor for reconditioning or repair.

1. Inspect the work area for debris and other material that could cause injuries or interfere with the operation of the unit. Be sure that the Davit is positioned on stable, hard ground before setting it up.
2. A competent person, for example a safety director, must design an appropriate inspection procedure and schedule based on amount of use, and working and environmental conditions.
3. Remove from service immediately if any function, component or part does not pass inspection, or whenever subjected to a severe free fall.
4. Never use the Davit in conjunction with safety devices not manufactured by GEMTOR, INC. or designed specifically for use with this Davit without the express prior permission of GEMTOR, INC.

**WARNINGS:**

- **Employer: Instruct employee as to proper use and warning before use of this equipment.**
- **Designed only to raise or lower one worker of not more than 350 lbs. Or equipment of not more than 600 lbs. DO NOT exceed maximum recommended working load.**
- **Read, understand and follow all instructions and warnings provided with this unit.**
- **For use by properly trained personnel only.**
- **Always use the buddy system (two workers) while operating.**
- **Insure that the Davit is positioned on a hard, stable surface before use.**
- **To insure compatibility, use only Gemtor components.**
- **Inspect before use. If any part or component shows damage or excessive wear, or does not function properly, the entire unit should be removed from service. DO NOT USE IF The device appears to be damaged.**
- **All occupational protective equipment must be inspected and thoroughly tested before each use.**
- **DO NOT attempt to adjust, repair or modify Gemtor Davit; for prompt repair or reconditioning, return the unit to Gemtor Inc., prepaid.**
- **Do not use for other than intended purpose.**
- **NEVER work above the anchor point.**
- **ALWAYS work directly under the anchor point. Worker must be vertically in line with device to avoid swing-fall injuries (pendulum effect).**

**INSPECTION LOG**


**IF YOU HAVE ANY QUESTIONS CONCERNING THE CORRECT USAGE OF THIS OR ANY GEMTOR PRODUCT, DO NOT USE, CALL (TOLL FREE) 1-800-405-9048**

Do not try to adjust, repair or modify Gemtor equipment; for prompt service, please contact:

**GEMTOR, INC., ONE JOHNSON AVENUE, MATAWAN, NJ 07747, 732-583-6200**

© Copyright 1995-2021 Gemtor, Inc.