



... when your life is on the line™

# OWNER'S MANUAL

Installation, Operating, Inspection and Maintenance Instructions  
Sentry Self-Retracting Lifelines

**SERIES:**

**SL2 - Cast aluminum housing**

**SRL- Steel housing**



## **Warning**

You must read and fully understand all instructions, or have all instructions explained to you, before attempting to use this device. Equipment must not be installed, operated or inspected by anyone who does not understand this Owner's Manual. Failure to observe these instructions could result in serious injury or death. Careless or improper use of this equipment can result in serious injury or death. Training and instruction review should be repeated at regular intervals. If you have any questions regarding these instructions or need additional copies, call Gemtor toll free at 800-405-9048.

**IMPORTANT: THESE INSTRUCTIONS SHOULD BE KEPT  
WITH THE DEVICE AT ALL TIMES.**



Gemtor, Inc. • One Johnson Avenue • Matawan, NJ 07747  
Phone: 732-583-6200 • 800-405-9048 • Fax: 732-290-9391  
Web: [www.gemtor.com](http://www.gemtor.com) • Email: [sales.info@gemtor.com](mailto:sales.info@gemtor.com)



**IMPORTANT INFORMATION:**

**Purchased from (Distributor):** \_\_\_\_\_

**Address:** \_\_\_\_\_

\_\_\_\_\_

**City:** \_\_\_\_\_ **State** \_\_\_\_\_ **Zip** \_\_\_\_\_

**Purchase Date:** \_\_\_\_\_

**Model Number:** \_\_\_\_\_

**Serial Number:** \_\_\_\_\_

**Property of:**

\_\_\_\_\_

\_\_\_\_\_

\_\_\_\_\_

\_\_\_\_\_

\_\_\_\_\_

**Keep this information for future reference.**

**IMPORTANT: Return registration card immediately**

## DESCRIPTION:

The Sentry is a personal fall protection device with 30', 50', 65' or 100' of galvanized or stainless steel cable or Tech 12 rope, on a spring-wound drum with a centrifugal braking system in a weather-sealed cast aluminum or stamped steel housing. The device allows maximum freedom of movement and stops a worker within 2 feet (.61 Meters) if a fall occurs. If the weight capacity listed on the device is not observed, the stopping distance may increase significantly. Please contact Gemtor if you have an employee that exceeds the rated capacity.

Gemtor Sentry Self-Retracting Lifelines are part of a complete fall protection system which should consist of:

- 1) An anchorage point meeting OSHA requirements for retracting lifelines.
- 2) Anchorages used for attachment of personal fall arrest equipment shall be independent of any anchorage being used to support or suspend platforms and capable of supporting at least 5,000 pounds (22.2 kN) per employee attached [OSHA 1926.502(d)(15)]
- 3) A locking type connector to mount the Sentry device to the anchorage point.
- 4) A Sentry Self-Retracting Lifeline.
- 5) A full-body harness with attachment point located in the center of the back at shoulder level. A front attachment point may also be used when ascending or descending a vertical fixed ladder.

## AVAILABLE MODELS:

**SL2-30**..... Self-Retracting Lifeline w/ 30 feet of galvanized cable.  
**SL2-50**..... Self-Retracting Lifeline w/ 50 feet of galvanized cable.  
**SL2-100**..... Self-Retracting Lifeline w/ 100 feet of galvanized cable.  
**SL2-30S** ..... Self-Retracting Lifeline w/ 30 feet of stainless steel or Tech 12 cable.  
**SL2-50S** ..... Self-Retracting Lifeline w/ 50 feet of stainless steel or Tech 12 cable.  
**SL2-100S** ..... Self-Retracting Lifeline w/ 100 feet of stainless steel or Tech 12 cable.  
**SRL-30** ..... Self-Retracting Lifeline w/ 30 feet of galvanized cable.  
**SRL-50** ..... Self-Retracting Lifeline w/ 50 feet of galvanized cable.  
**SRL-65** ..... Self-Retracting Lifeline w/ 65 feet of galvanized cable.  
**SRL-30S**..... Self-Retracting Lifeline w/ 30 feet of stainless steel or Tech 12 cable.  
**SRL-50S**..... Self-Retracting Lifeline w/ 50 feet of stainless steel or Tech 12 cable.  
**SRL-65S**..... Self-Retracting Lifeline w/ 65 feet of stainless steel or Tech 12 cable.

## SPECIFICATIONS:

Model #	SL2-30	SL2-50	SL2-100	SRL-30	SRL-50	SRL-65
Maximum Work Capacity	310 lbs. (140 kg)	310 lbs. (140 kg)	310 lbs. (140 kg)	310 lbs. (140 kg)	310 lbs. (140 kg)	310 lbs. (140 kg)
Cable Length	30'	50'	100'	30'	50'	65'
Cable diameter	3/16"	3/16"	3/16"	3/16"	3/16"	3/16"
Cable breaking strength						
Galvanized	4200 lbs.	4200 lbs.	4200 lbs.	4200 lbs.	4200 lbs.	4200 lbs.
Stainless Steel	3700 lbs.	3700 lbs.	3700 lbs.	3700 lbs.	3700 lbs.	3700 lbs.
Tech 12	5600 lbs.	5600 lbs.	5600 lbs.	5600 lbs.	5600 lbs.	5600 lbs.
Brake Activation Speed	4.5 ft./sec.	4.5 ft./sec.	4.5 ft./sec.	4.5 ft./sec.	4.5 ft./sec.	4.5 ft./sec.
Weight	20 lbs.	29 lbs.	45 lbs.	15 lbs.	26 lbs.	27 lbs.
Max Arresting Force	<900 lbs. (4 kN)	<900 lbs. (4 kN)	<900 lbs. (4 kN)	<900 lbs. (4 kN)	<900 lbs. (4 kN)	<900 lbs. (4 kN)
Max Arresting Distance	24"(.61m)	24"(.61m)	24"(.61m)	24"(.61m)	24"(.61m)	24"(.61m)

**TRAINING:**

The employer shall provide a training program for each employee who might be exposed to fall hazards. The program shall enable each employee to recognize the hazards of falling and shall train each employee in the procedures to be followed in order to minimize these hazards.[OSHA 1926.503(a)(1)]

The employer shall assure that each employee has been trained, as necessary, by a competent person qualified in the following areas:

- (I) The nature of fall hazards in the work area;
- (ii) The correct procedures for erecting, maintaining, disassembling, and inspecting the fall protection systems to be used;
- (iii) The use and operation of guardrail systems, personal fall arrest systems, safety net systems, warning line systems, safety monitoring systems, controlled access zones, and other protection to be used;
- (iv) The role of each employee in the safety monitoring system when this system is used;
- (v) The limitations on the use of mechanical equipment during the performance of roofing work on low-sloped roofs;
- (vi) The correct procedures for the handling and storage of equipment and materials and the erection of overhead protection; and
- (vii) The role of employees in fall protection plans;
- (viii) The standards contained in this subpart.[OSHA1926.503(a)(2)]

The employer shall verify compliance with paragraph (a) of this section by preparing a written certification record. The written certification record shall contain the name or other identity of the employee trained, the date(s) of the training, and the signature of the person who conducted the training or the signature of the employer. If the employer relies on training conducted by another employer or completed prior to the effective date of this section, the certification record shall indicate the date the employer determined the prior training was adequate rather than the date of actual training. [OSHA 1926.503(b)(1)]

**INSTALLATION:**

- 1) To minimize the possibility of a swing fall hazard, install the device directly over the work area.
- 2) Attach the device to the anchor point (must meet OSHA requirements) using a locking connector.
- 3) Attach the locking snaphook at end of cable to the D-ring on the back of the harness. The D-ring must be in center of wearer's back at or above shoulder level.

<b> Warning</b>
<b>DO NOT ATTACH ANYTHING TO THE SNAPHOOK AT THE END OF THE RETRACTABLE LIFELINE CABLE TO EXTEND ITS LENGTH BEYOND ITS DESIGNED LENGTH!</b>

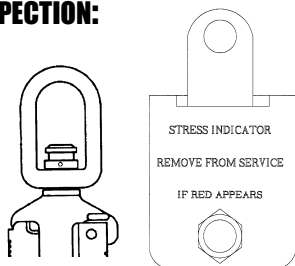
**INSPECTION:**

FIG. 1 – New/unactivated

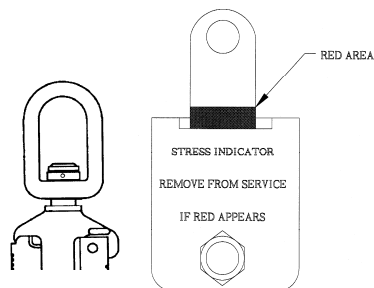


FIG. 2 - Activated

**STRESS INDICATOR**

Your retractable lifeline may have been supplied with one of the two styles of stress indicators shown above. It is located at the end of the lifeline's cable or rope, as an integral part of or just above the locking swivel snaphook. When new, the stress indicator appears as shown in fig. 1. If subjected to a fall arrest impact (activated), it will appear as shown in figure 2. **DO NOT USE** if the stress indicator has been activated.

**BEFORE EACH USE**

Inspect the entire fall arrest unit for any indication of damage, wear or malfunction to include but not limited to, worn cable or damaged locking snaphook. Remove from service immediately if the unit is damaged, has been subjected to a fall, does not pass inspection, the stress indicator reads DO NOT USE or if the unit has not been inspected by the Gemtor factory within the last 12 months.

**DO NOT** attempt to adjust, repair or modify Sentry Self-Retracting Lifelines; for prompt repair, reconditioning or recertification, return the unit to Gemtor Inc., prepaid.

**Inspect work area:**

Inspect and clear the vicinity around the work area of debris and other materials that could cause injuries or interfere with the operation of the device.

**Check cable:**

Pull all cable out of housing and allow to retract slowly under light tension. While the cable is retracting, check for cuts, kinks, broken strands, excessive wear, foreign substances or other damage.

**Check locking mechanism:**

Pull approximately two (2) feet of cable out of the housing and give it a quick hard tug. The cable should lock.

**Check cable retraction before each use:**

Pull approximately four (4) feet of cable out of the housing and allow to retract; maintain slight tension on cable. The cable should retract smoothly and completely. Do not allow cable to retract freely.

**Inspect snaphooks and connecting hardware:**

Snaphooks and connecting hardware shall not be distorted or have any sharp edges, burrs, cracks, worn parts or corrosion. The snaphook keeper spring shall provide tension to close the keeper in the locked position.

## **Operating Instructions:**

The Sentry shall be mounted to an overhead anchor point which meets OSHA requirements for retracting lifelines. The worker shall use a full-body harness with a D-ring in the center of the wearer's back near shoulder level.

Attachment points, connectors and other equipment must meet applicable OSHA and ANSI standards.

The unit releases cable out as the worker moves to allow maximum freedom of movement and automatically retracts to reduce the possibility of free fall injury caused by slack cable. In the event of a fall, a centrifugal brake mechanism is activated, and the fall is arrested within 24 inches.

Always allow lifeline to retract completely when not in use. Use a tag-line to pull lifeline out of housing that is connected to anchorage too high for the worker to reach.

### **DO NOT ATTACH ANYTHING TO THE SNAPHOOK AT THE END OF THE RETRACTABLE LIFELINE CABLE TO EXTEND ITS LENGTH BEYOND ITS DESIGNED LENGTH!**

Equipment must be inspected before each use; if bent, damaged, if parts have been substituted or if operation is questionable in any way, **DO NOT USE**. Return to Gemtor for reconditioning or repair.

This device should be returned to our facilities on an annual basis for physical inspection and recertification or whenever subjected to fall arrest forces (impact loaded). Only original Gemtor replacement parts are approved for use in this device.

**IF YOU HAVE ANY QUESTIONS CONCERNING THE CORRECT USAGE OF THIS OR ANY GEMTOR PRODUCT, DO NOT USE, CALL (TOLL FREE) 1-800-405-9048**

**WARNINGS:****DO NOT USE IF:**

The device appears to be damaged.

The cable is worn or partially cut.

The locking snap hook does not function properly.

The cable does not retract properly.

The device does not lock and stop the cable.

The unit has arrested a severe fall.

The stress indicator reads **DO NOT USE**.

The unit has not inspected by the factory within the last 12 months

- **DO NOT attempt to adjust, repair or modify Sentry Self-Retracting Lifelines; for prompt repair or reconditioning, return the unit to Gemtor Inc., prepaid.**
- **NEVER ALLOW CABLE TO RETRACT FREELY.**
- **DO NOT use steel cable near electrical lines or equipment.**
- **DO NOT attach more than one worker to the device.**
- **DO NOT use for lifting or towing.**
- **DO NOT use as a work positioning device.**
- **DO NOT attach anything to the snaphook at the end of the retractable lifeline cable to extend its length beyond its designed length.**
- **NEVER clamp off or stand on webbing nor allow cable to become slack during use.**
- **NEVER allow cable to cross under or wrap around the legs, arms, neck or torso of the user or other workers.**
- **NEVER work above the anchor point.**
- **ALWAYS work directly under the anchor point. Worker must be vertically in line with device to avoid swing-fall injuries (pendulum effect).**

**ALWAYS rig to allow a minimum of 3 ft. clearance to the next lower level or obstructions below.**

Do not try to adjust, repair or modify Gemtor Self-Retracting Lifelines; for prompt service, please contact:

**GEMTOR, INC.**

One Johnson Avenue

Matawan, NJ 07747

732-583-6200

